



**EXCELLENT**  
**LASER**



An ISO 9001:2015  
Certified company

# **EXCELLENT LASER**

## **Solution For Sheet Metal**

Factory Address :Sr. No. 679/20, Kuruli, Chakan, Aalandi Road, Pune, Maharashtra, India, 410501.

Website : [www.excellentlaser.in](http://www.excellentlaser.in), [www.excellentdisplayrack.com](http://www.excellentdisplayrack.com)



**MEDICAL WALL RACK**



❑ **FULL DISPLAY RACK**

- HEIGHT-7 FT.
- LENGTH-3FT.
- WIDTH:TOP-1FT, BOTTOM-1.5FT.
- MATERIAL-MS POWDER COATED.
- GLASS SHELVES- 5+2 NOS ADJUSTABLE.
- FRONT GLASS-SLIDING ON TRACK.

## MEDICAL WALL RACK



### ❑ FULL DISPLAY RACK

- 3 RACKS COMBINE FULL DISPLAY .
- L-3+3+3 FEET \_HEIGHT 7'
- USED-
  - SUSPENSIONS.
  - MEDICINE
  - COSMETICS
  - VARIETY OF PRODUCTS

## MEDICAL WALL RACK-FULL DROWER



- **HEIGHT-7 FT.**
- **LENGTH-3FT.**
- **WIDTH:TOP-1FT, BOTTOM-1.5FT.(CONTAIN ALL DROWER)**
- **DROWER-10 NOS**
- **SLIDER- GODREJ MAKE**
- **MATERIAL-MS POWDER COATED.**
- **GLASS SHELVES- 5NOS ADJUSTABLE.**
- **FRONT GLASS-SLIDING ON TRACK.**

## MEDICAL WALL RACK-FULL DROWER



### ❑ FULL DROWER-7'X3+3

- HEIGHT-7 FT.
- LENGTH-3FT+3FT.....
- WIDTH:TOP-1FT, BOTTOM-1.5FT.

**MEDICAL WALL RACK-2 DROWER**



❑ 2 DROWER RACK -7'X3FT

**MEDICAL WALL RACK-8' FULL  
DRAWER**



- ❑ 8'X3, FULL DRAWER RACK -
- 4-GLASS SHELVES
- TOP 2 COMPARTMENTS WITH FRONT SLIDING GLASS.
- 10 NOS OF DROWERS.

**MEDICAL WALL RACK-8' X3' FULL  
DRAWER**



❑ 8'X3, FULL DROWER  
RACK -



**MEDICAL WALL-2X3 LOFT**



**2'X3' - LOFT**

- ❑ HEIGHT=2FT
- ❑ LENGTH=3FT



**GLASS RACK -6 INCH RACK/ LOFT**



- LENGTH-3FEET
- WIDTH-6 INCH
- HEIGHT- ADJUSTABLE
- GLASS SHELF

**PRODUCT DISPLAY RACK (GLASS)**



- LENGTH-3FEET
- WIDTH-1.5 FEET
- HEIGHT- MAX-9FEET
- GLASS SHELF
- FRONT SLIDING GLASS

**FINISHED MEDICAL STORES**

**MEDICAL STORES**



**PILLAR RACK**



**BREAD AND EGG RACK**



**HAPPY CUSTOMERS**



**HAPPY CUSTOMERS**



**WALL RACK**



**SIZE-7X3.8**



**SIZE-7X3**



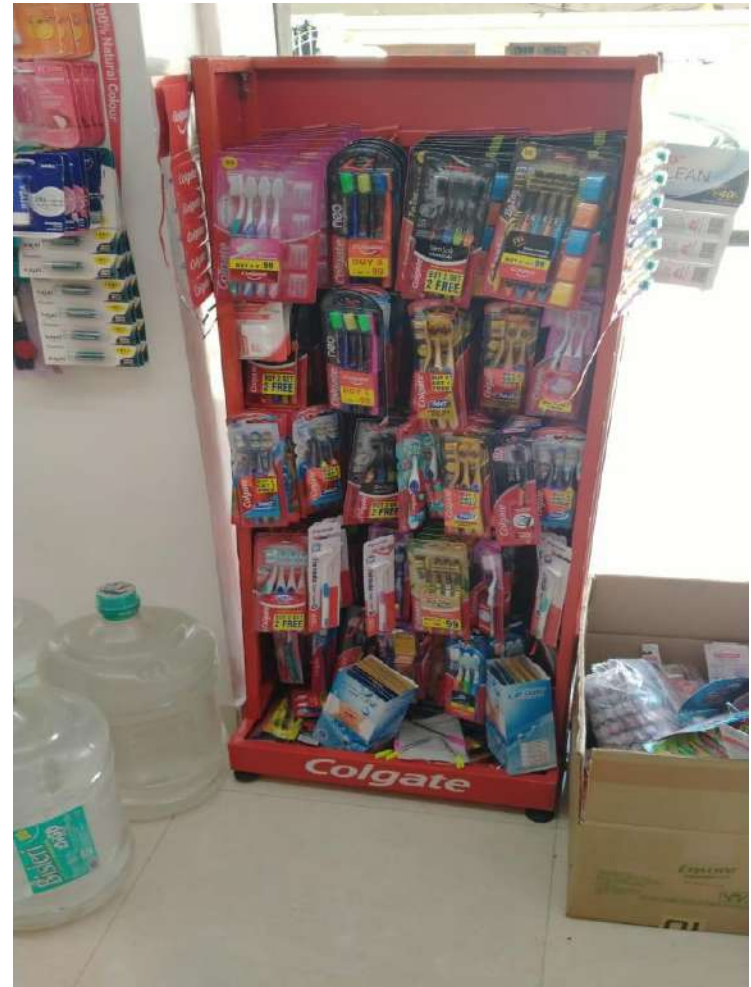


**HANGING RACKS-WITH HOOKS AND SHELVES**



**HANGING WALL MOUNTED JALI**

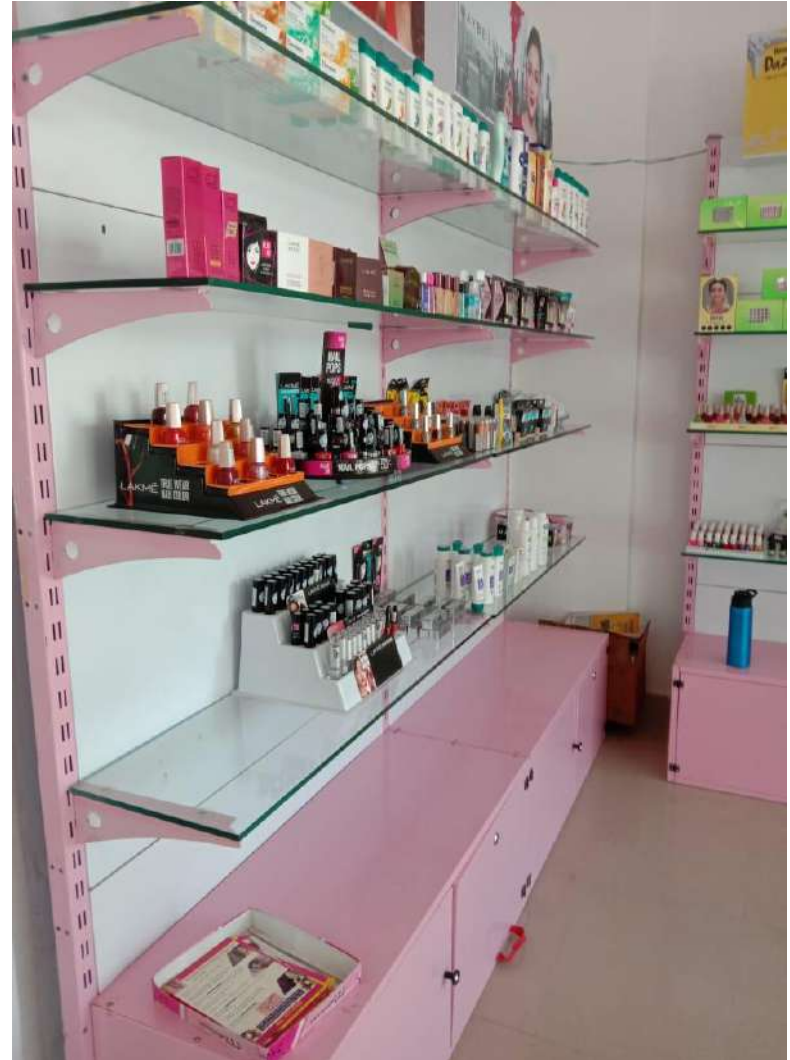
**TOOTH BRUSH AND OTHER HANGING RACK**



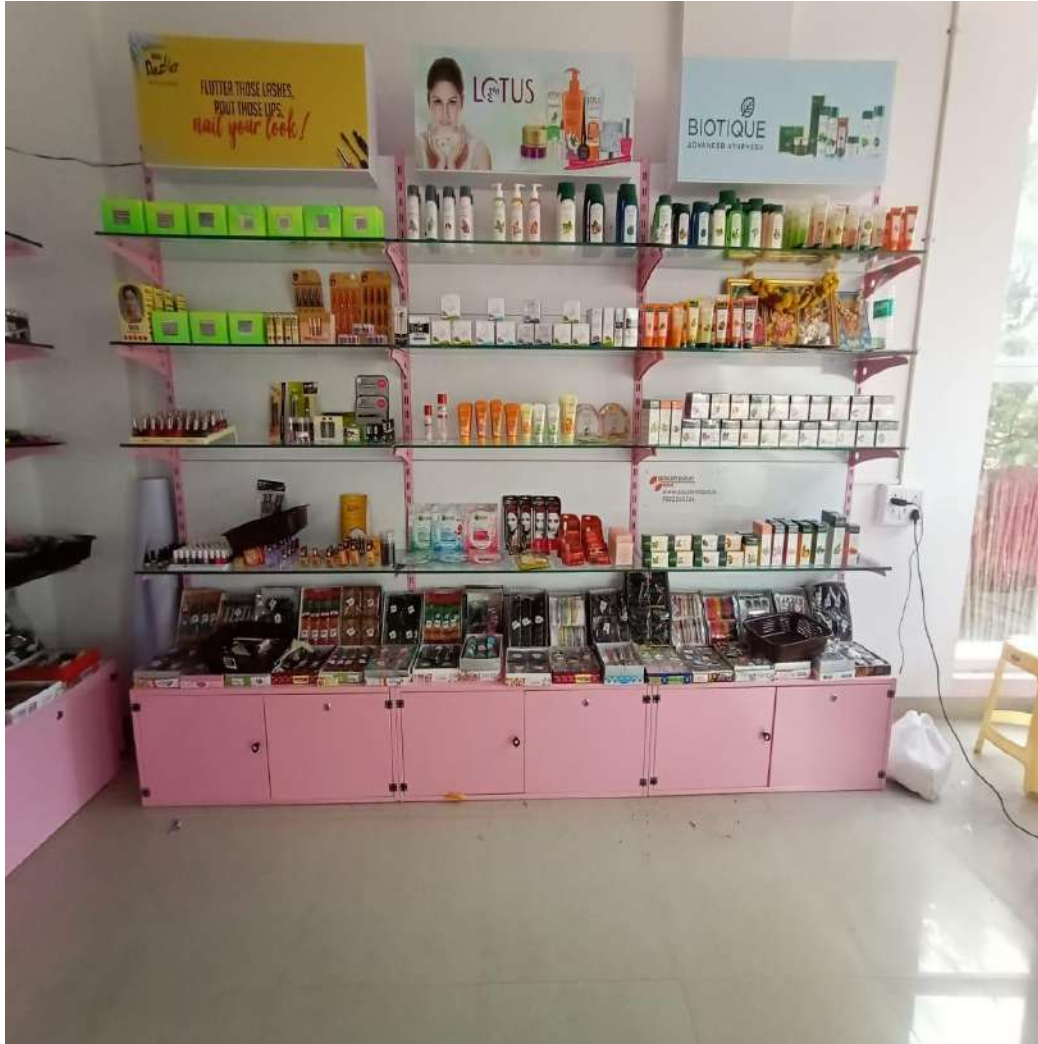
**PRODUCT/BRAND RACKS**



**PRODUCT DISPLAY RACKS- GLASS SHELVE**



**PRODUCT DISPLAY RACK**



**SERVICE COUNTER FOR  
MINIMARKET/MEDICAL/ GARMENTS**



**SERVICE COUNTER FOR  
MINIMARKET/MEDICAL/ GARMENTS**



**SERVICE COUNTER FOR  
MINIMARKET/MEDICAL/ GARMENTS**





**CENTRAL COUNTER WITH DROWER**



**SERVICE COUNTER FOR  
MINIMARKET/MEDICAL/ GARMENTS**



# SOME OF OUR STORES AND MALLS



**EXCELLENT**  
DISPLAY RACK

**AITF**  
Management Certification Ltd.  
ISO 9001 CERTIFICATION

**NABCB**  
QM 055

An ISO 9001: 2015  
Certified company

**SUPERMARKET SHELVES**

# SOME OF OUR INSTALLED STORES AND MALLS



# SOME OF OUR STORES AND MALLS

## MEDICAL STORES



# Team and Achievements



An ISO 9001:2015  
Certified company



# Team and Achievements



# Some More Attractions



Garments Store



Fridge Racks



Product Display Rack



Grocery Contour



Grocery Contour



Cosmetic Display Rack



# Some More Attractions



Pillar Display Racks



Shoe Display Racks



Cosmetic Display Racks



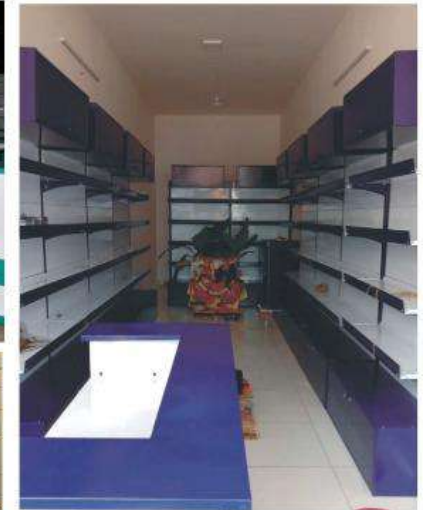
LED Display Racks



# Some More Attractions



An ISO 9001:2015  
Certified company



# Some More Attractions



An ISO 9001:2015  
Certified company

**HEAVY  
DUTY  
RACKS**



Mobile Compactor Storage System



Wall Racks



TV Display Rack



TV Display Rack



AC Display Rack



Vegetable Racks



Vegetable Racks

# Team and Unit at Chakan-Pune

## OUR INFRASTRUCTURE





**EXCELLENT**  
**LASER**

Contact Us-

**EXCELLENT DISPLAY RACK**

- ☐ +91-9822268354- MR.ANIL KINGE
- ☐ +91-9922992004-EXCELLENT DISPLAY
- ☐ +91-7972289401-MR.RAKESH PATIL
- ☐ +91-9890680301-MR.PANKAJ PATIL

**Office & Works**

*S.R.NO:679/20, KURULI, ALANNDI PHATA, CHAKAN, TAL-KHED, DIST-PUNE-410 501*

GSINO: 27AYTPK2050K1Z2

PANNo: AYTPK2050K

**Email :**

- [inquiry@excellntlaser.in](mailto:inquiry@excellntlaser.in),
- [excellntlaser@rediffmail.com](mailto:excellntlaser@rediffmail.com)
- [rakeshpatil@excellntlaser.in](mailto:rakeshpatil@excellntlaser.in),
- [anilkinge@excellntlaser.in](mailto:anilkinge@excellntlaser.in)

**Website :**

- [www.excellntlaser.in](http://www.excellntlaser.in),
- [www.excellentdisplayrack.com](http://www.excellentdisplayrack.com)